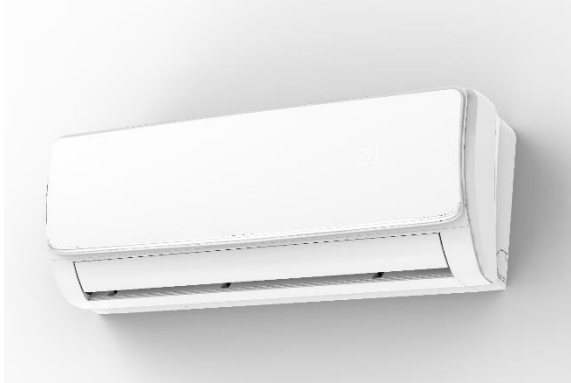


Datasheet: Comfospit Ikaro High Wall HW Inverter

Codice scheda: – Data 25/05/2018

Group: Hydronic Units

Description



The hydronic unit Comfospit IKARO HW Inverter, for wall mount, is designed to excel for its quietness, a key feature for any residential application.

The pleasant aesthetics, the unobtrusive 20 cm thickness, the high-efficiency heat exchanger, all contribute to its successful installation in any room.

The tangential cross-flow fan, is driven in continuous modulation through a PID control algorithm, ensuring the finest control and constant room temperatures.

The enclosure, that fits an elegant see-through display, accommodates the drain pan, the air filters, and the heat exchanger with ½" water connections.

IKARO HW offers several control options as standard supply, including an IR remote control, 3 input dry contacts, as well as a Modbus Interface to connect it to home automation.

Application field

The Ikaro HW series is conceived to:

- Warm, cool and dehumidify the rooms, with enhanced quietness features for residential application.
- Have high power output at high as well as low feed water temperatures, working extremely well with heat pumps and other modern water-based systems.
- Be a perfect match for traditional water systems, as well as condensing boiler, solar systems and heat-pumps.

The patented Hydrosilence technology, that leverages the PID control algorithm, the cross-flow fan and the modulating inverter technology, ensures the highest thermal comfort coupled to the best acoustic performance in the market.



Heating



Cooling



Quiet



Cross-flow
fan

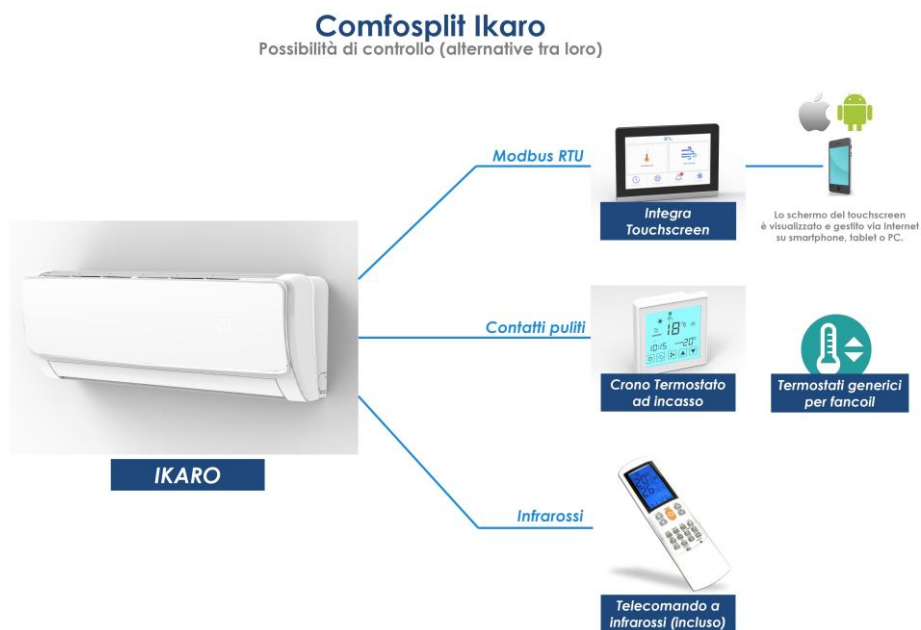


PID Modulation



Ikaro can be controlled, as standard supply, alternatively by:

- The Infrared remote control (supplied with each unit)
- An external thermostat, using the 3 free-potential input contacts to select 3 different fan speeds.
- A home automation system, through the Modbus RTU Interface. Ideal Clima implemented a full control suite -Integra Benessere-, its cornerstone being the Integra Touchscreen and the related remote app controls.



Dimensions



CODE	DESCRIPTION	L [mm]	H [mm]	P [mm]
THE01D	COMFOSPLIT IKARO HI-WALL 180 HW INVERTER	850	300	198
THE02D	COMFOSPLIT IKARO HI-WALL 250 HW INVERTER	850	300	198
THE03D	COMFOSPLIT IKARO HI-WALL 350 HW INVERTER	850	300	198
THE05D	COMFOSPLIT IKARO HI-WALL 500 HW INVERTER	850	300	198
THE07D	COMFOSPLIT IKARO HI-WALL 750 HW INVERTER	850	300	198

All measures in mm

Technical Data

Description		IKARO HW 180	IKARO HW 250	IKARO HW 350	IKARO HW 500	IKARO HW 750
Code		THE01D	THE02D	THE03D	THE05D	THE07D
Total Cooling Power 7°C (1)	W	1'112	1'303	1'689	2'570	3'330
Sensible cooling Power	W	890	1'072	1351	2'107	2'720
Water flowrate	l/min	3,17	3,75	4,83	7,92	9,67
Pressure drop Ikaro HW only	kPa	5,25	6,9	11	27	39
Pressure drop 2- or 3-way valve KV _s =1,7	kPa	1,4	2	3,2	8,7	13
Heating Power 45 °C (2)	W	1'308	1'629	2'069	3'260	4'229
Water Flowrate	l/min	3,7	4,7	5,9	9,3	12,1
Pressure drop Ikaro HW only	kPa	6,1	9,1	14,4	37,6	57,4
Pressure drop 2- or 3-way valve KV _s =1,7	kPa	1,9	3,1	4,8	12	20,3
Air flowrate max speed.	mc/h	180	250	340	520	730
Sound pressure Max. speed (*)	dB (A)	13	16	21	27	42
Sound pressure Med. speed (*)	dB (A)	11	13	18	25	39
Sound pressure Min. speed (*)	dB (A)	11	12	16	23	37
Mains and protection grade	V/ph/Hz	230/1+N/50----IP23				
Electr. consumption max. speed	W	12,6	15	18,3	28	42
Max. Current	A	0,14	0,15	0,16	0,20	0,22
Water connections	inch	Rc ½"				
Water content	liter	1,2				
Drain pipe diameter	mm	DN 15				
Max. Working pressure	MPa	1,6				
Net weight without water	Kg	13				

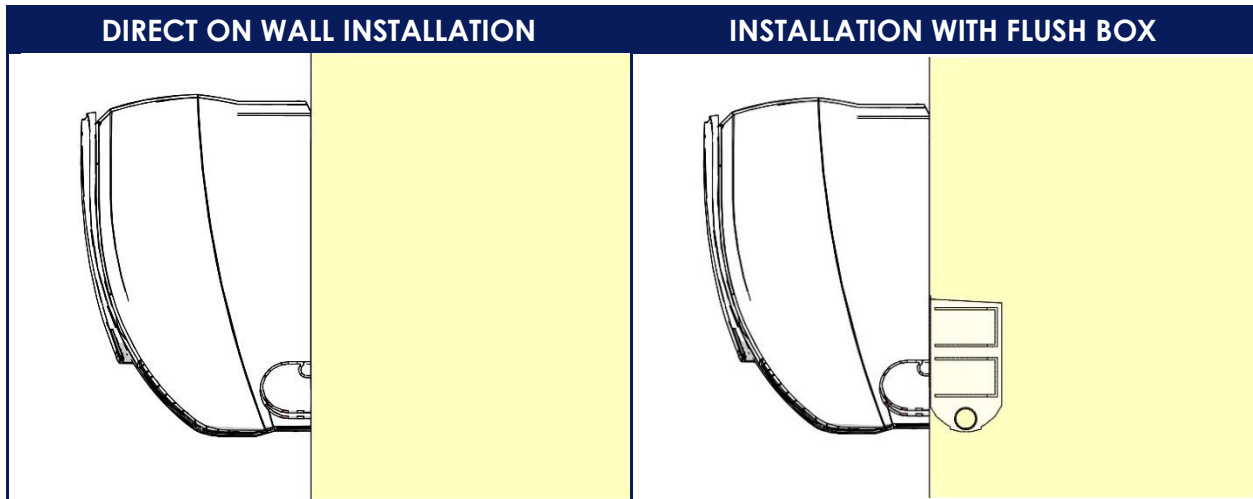
(1) Water Temp. Feed 7°, Δ T 5 °C, Room Temp 27 °C UR 47% (UNI EN 1397 :2015)

(2) Water Temp. Feed 45°, Δ T 5 °C Temp. Ambiente 20 °C (UNI EN 1397:2015)

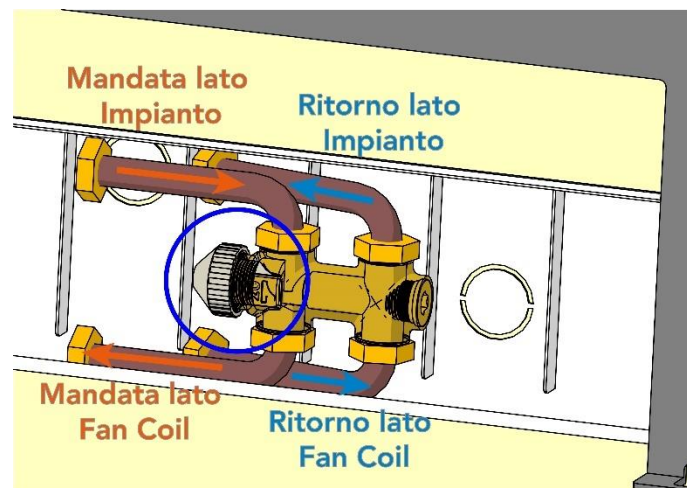
(*) Sound pressure level (dBA) r=1,5m, Q=1 (UNI EN ISO 3741:2010)

Installations and charts

Ikaro can be installed directly on the wall or using the usual predisposition flush box for air conditioning indoor units.



The flush box can accommodate also the 2- or 3-way valve kits (code TGCL12 or TGCL13 respectively), sold separately.



Comfosplit Ikaro – water pressure drop

Ikaro - Perdite di Carico

